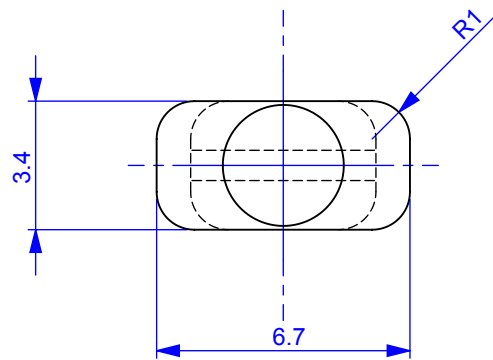
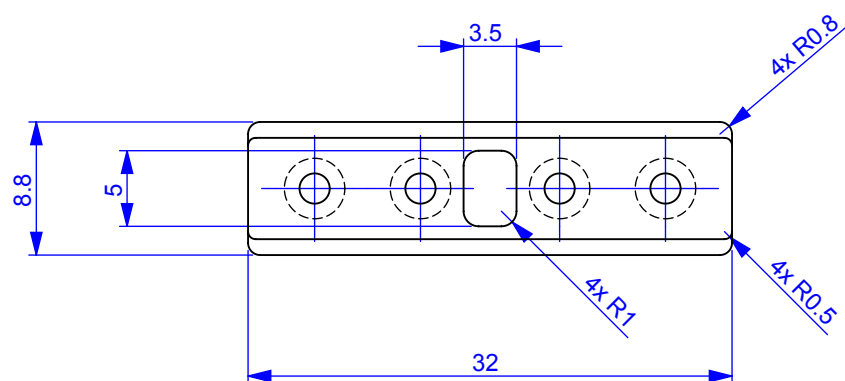
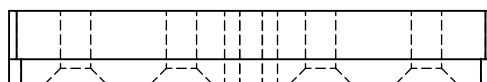
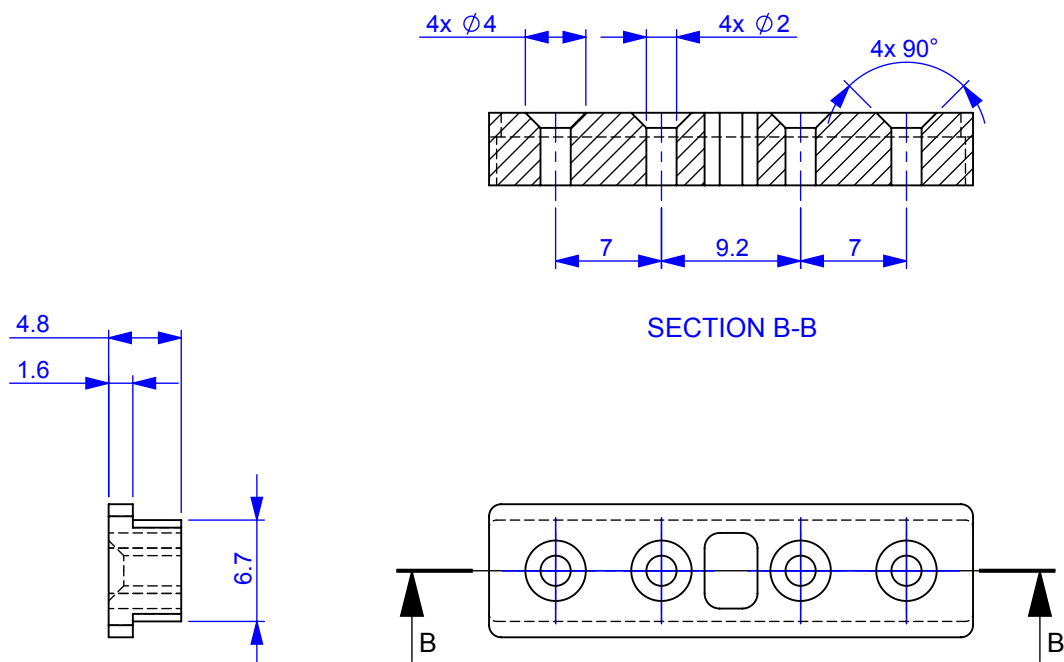
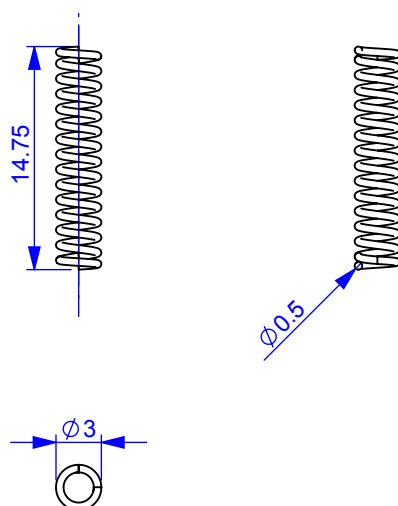


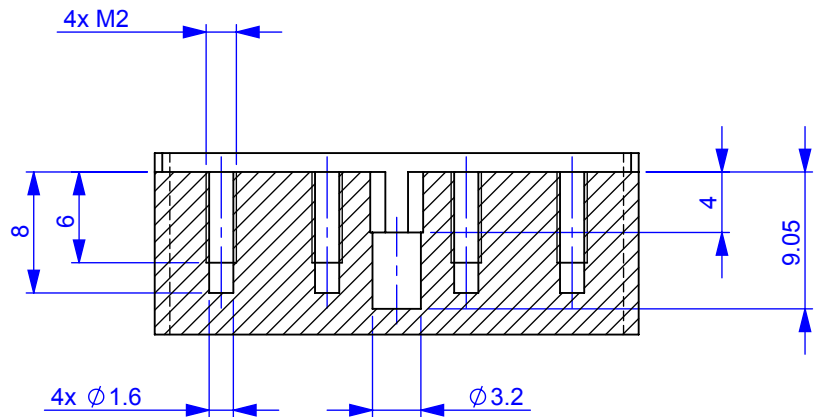
SECTION A-A



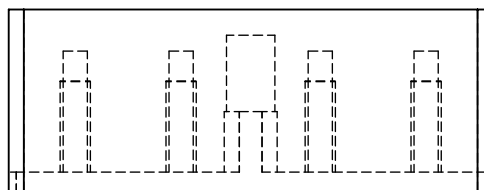
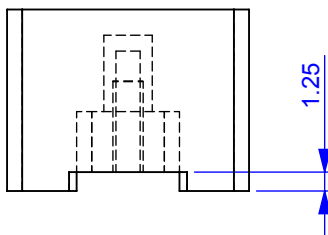
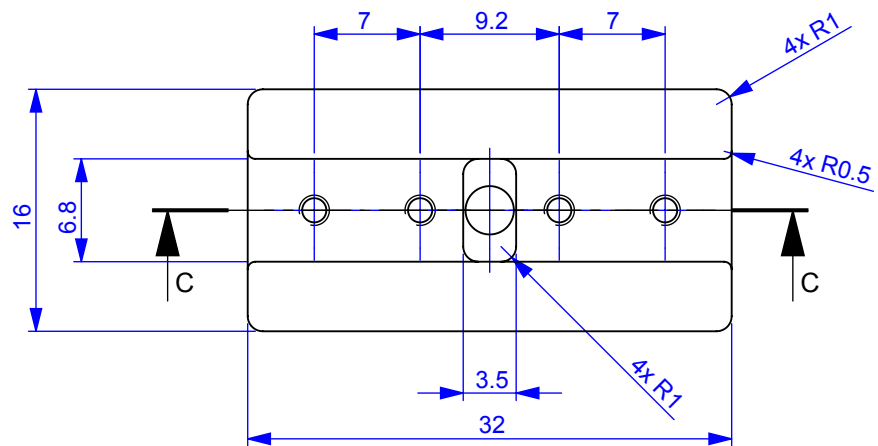




Compression spring	
Direction	right wound
Inner diameter	2 mm
Mean diameter	2.5 mm
Outer diameter	3 mm
Wire diameter	0.5 mm
Free lenght	14.75 mm
Active coils	13
Closing coils Z	1
Closing coils K	1
Pitch at free length	1 mm
End types	not ground
Material	Stainless spring wire DIN 1.4571
Spring rate	3.03254 N/mm
Precison according to CSN 02 6002	



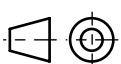
SECTION C-C



This model is available in various data formats. You can modify it to fit your HUD.



Units  
mm



Scale  
2:1

Size  
A4

Sheet  
5 of 6

Date  
19.12.2017

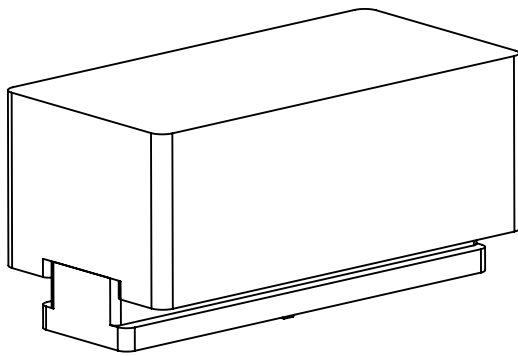
Part: HUD base

Part No: 4017

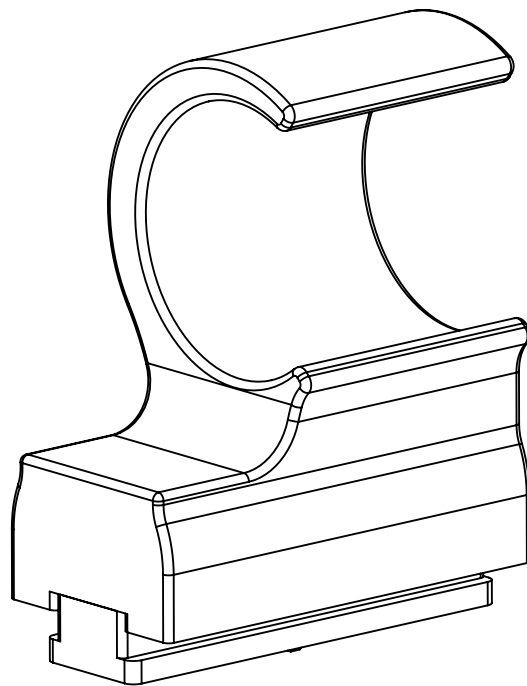
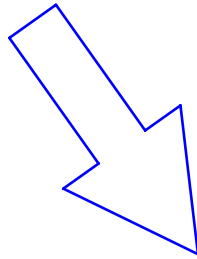
Material: POM-C, black

Stock:

Weight: 7.87 g



HUD base



Example of modification